



## WebSense Enterprise® Premium Groups™

Additional Web site categories available through Websense Enterprise® software provide a higher level of protection from Web-based threats. Websense Enterprise Premium Groups™ (PG) allow you to set and enforce policies with respect to emerging threats, such as bandwidth-intensive streaming media, malicious mobile code (MMC), phishing sites, and spyware, that pose productivity, resource, and security risks to your organization.

### Enhance productivity with Websense Enterprise Productivity PG™

Productivity PG enables organizations to improve employee productivity by managing access to Web site categories considered to be non-business related and especially time-consuming.

**Productivity PG helps manage employee access to the following categories:**

- Advertisements
- Message boards & clubs
- Freeware/software downloads
- Online brokerage & trading
- Instant messaging
- Pay-to-surf

### Manage bandwidth with Websense Enterprise Bandwidth PG™

Bandwidth is a limited resource in any network. Such Internet activities as accessing streaming media sites, loading personal files or photos to Internet storage sites, or downloading copyrighted music and video consume bandwidth needed for business-critical applications and potentially pose legal liability and confidentiality issues as well.

Bandwidth PG augments Websense Enterprise with a powerful bandwidth management tool.

**Bandwidth PG helps manage employee access to the following categories:**

- Streaming media
- Internet radio & TV
- Personal network storage/backup
- Internet telephony
- Peer-to-peer file sharing

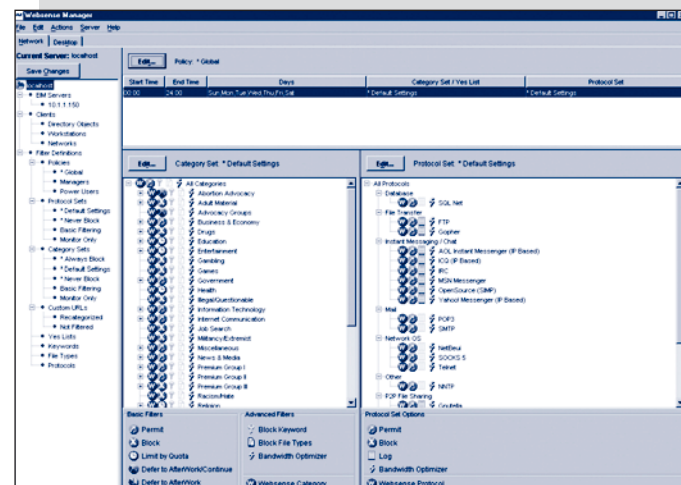
Did you know. . .

- 44% of corporate employees run streaming media applications.
- The Nimda worm, which was distributed via Web sites, cost companies considerable downtime and an estimated cleanup cost of \$2.6 billion.
- More than 2 million servers and PCs worldwide were affected by Nimda, including 70% of Fortune 1000 companies.
- 90% of PCs connected to the Internet are infected with spyware.
- Banner advertisements are increasing in bandwidth requirements. Rich media ads jumped to 28% of all ads served versus 17% a year prior.

**How will the Premium Groups help you?**

Mitigate security, productivity, and bandwidth issues for your organization; specifically:

- Block distracting banner advertisements.
- Increase productivity by managing access to unauthorized instant messaging websites.
- Eliminate legal risks and limit bandwidth drains by managing access to peer-to-peer file sharing sites.
- Block spyware transmissions to their host sites, preventing the outflow of sensitive data.
- Minimize the risk of mobile code attacks in the workplace, including Web-borne viruses, Trojan horses, worms, script attacks, and rogue Internet code.



Premium Group categories integrate seamlessly into Websense Enterprise Manager.

## Block access to spyware, phishing sites and MMC with Websense Enterprise Security PG™

Add an additional layer of security to your network by preventing employees from unknowingly accessing phishing sites and sites that are infected with MMC and that distribute spyware. Should spyware already reside on your corporate desktops, Security PG stops the transmission of sensitive information to host spyware servers.

**Malicious mobile code** is software designed to move from computer to computer and network to network and intentionally cause harm or modify computer systems. MMC may reside on seemingly innocent sites that employees visit to shop or plan travel, and its presence is often undetected. MMC can be delivered via Web-borne viruses, Trojan horses, worms, script attacks, and rogue Internet code, such as the Nimda worm.

Using proprietary Web site mining techniques, Websense® scans its URL database of millions of sites for malicious code, including ActiveX controls, Visual Basic script, JavaScript, and Java Applets. Then, using sophisticated algorithms, Websense categorizes those sites infected with MMC and blocks employee access to them.

**SiteWatcher™** is a value-added service included with Security PG that alerts you if your company Web site has been infected with MMC. This allows you to take immediate measures to prevent the spread of MMC to customers, prospects, and partners visiting your Web site.

**Spyware** is software installed on a computer, without the user's knowledge, that gathers information and relays it to advertisers or other interested parties. Spyware can collect and transmit information such as keystrokes, Web surfing habits, passwords, email addresses, and more. Spyware wastes system resources and bandwidth as it tracks and transmits information. More seriously, spyware can also pose grave security, confidentiality, and compliance risks.

Security PG stops spyware first by blocking access to sites that distribute spyware, then by preventing the transmission of employee and network information to host sites. Through proprietary processes and the WebCatcher™ feature – by which uncategorized Web sites from customers are sent back to Websense for review—Websense is able to identify spyware servers and block backchannel communications via port 80 connections.

**Phishing** and other fraud sites counterfeit legitimate business sites for the purpose of eliciting financial or other private information from users. Security PG helps address phishing by identifying URLs and blocking employee access to those sites.

**Security PG** helps manage employee access to the following categories:

- Spyware
- Malicious web sites
- Phishing and other frauds

**Download a free, fully functional 30-day trial at [www.websense.com/downloads](http://www.websense.com/downloads) today!**

**Websense Inc.**  
San Diego, CA USA  
tel 800.723.1166  
tel 858.320.8000  
[www.websense.com](http://www.websense.com)

**Websense UK**  
Chertsey, England  
tel +44 (0)1932. 796001

**Websense France**  
Paris, France  
tel +33 (0)15660. 5814  
[www.websense.fr](http://www.websense.fr)

**Websense Germany**  
Munich, Germany  
tel +49 (0)89 24445. 4005  
[www.deutsch.websense.com](http://www.deutsch.websense.com)

**Websense Japan**  
Tokyo, Japan  
tel +813.5322.1335  
[www.websense.co.jp](http://www.websense.co.jp)

**Websense Australia**  
Sydney, Australia  
tel +61 2 9006. 1621  
[www.websense.com.au](http://www.websense.com.au)

**Websense Greater China**  
Hong Kong  
tel +852.2855.8811  
[www.chinese.websense.com](http://www.chinese.websense.com)  
[www.prc.websense.com](http://www.prc.websense.com)

**Websense Latin America**  
Sao Paulo, Brazil  
tel +55.11.4612.0798

## How the Premium Groups work with Websense Enterprise

The Premium Group family of products can be seamlessly added to your existing Websense Enterprise deployments.

Once installed, Premium Groups activate additional categories in Websense Enterprise Manager and supplement the Websense Master Database. Companies can set policies for Premium Group categories, report on them, and, set appropriate bandwidth usage policies using Websense Enterprise Bandwidth Optimizer™ for specific users or groups.



Set policies by user, limiting access to high-risk categories in each Premium Group.



Premium Group categories integrate seamlessly into Websense Enterprise Explorer.